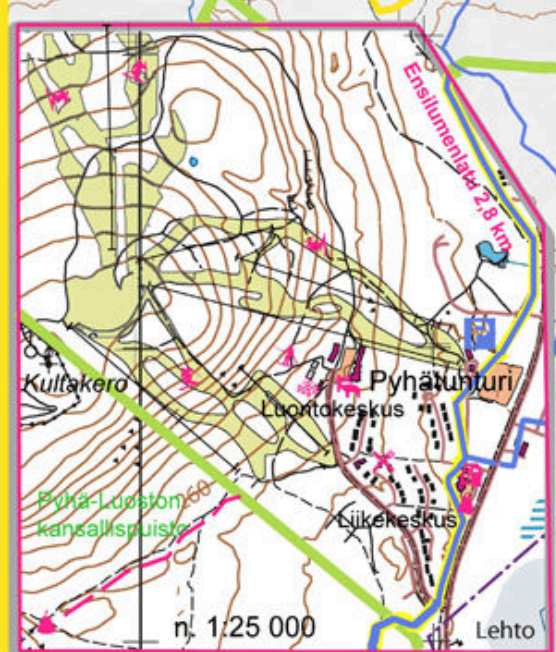
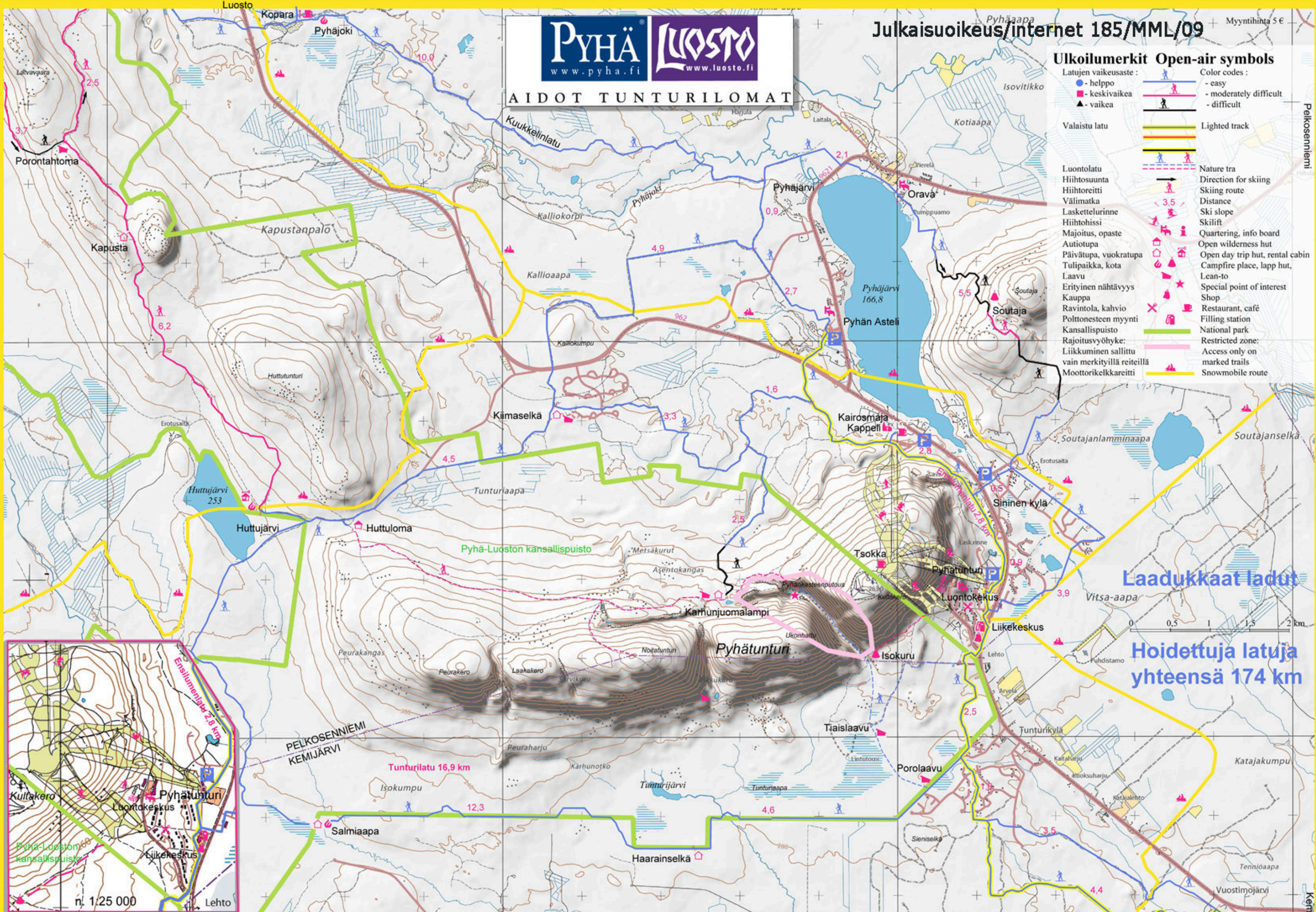


Ulkoilumerkit Open-air symbols

- | | |
|--|--|
| <p>Latujen vaikeusaste:</p> <ul style="list-style-type: none"> ● - helppo ■ - keskivaikaa ▲ - vaikea | <p>Color codes:</p> <ul style="list-style-type: none"> - easy - moderately difficult - difficult |
| <p>Valaistu latu</p> <ul style="list-style-type: none"> Lighted track | <p>Nature tra</p> <ul style="list-style-type: none"> Direction for skiing Skiing route Distance Ski slope Ski lift Quarterming, info board Open wilderness hut Open day trip hut, rental cabin Campfire place, lapp hut, Lean-to Special point of interest Shop Restaurant, café Filling station National park Restricted zone: Access only on marked trails Snowmobile route |



Laadukkaat ladut

Hoidettuja laturia yhteensä 174 km